

# MITCHELL-INNES & NASH

**Gideon Appah: *More Luck***  
534 West 26<sup>th</sup> Street  
September 8 – October 15, 2022



**GIDEON APPAH**  
*Purple Lake*, 2019  
Oil on canvas  
76 1/2 by 97 3/4 in. 194.3 by 248.3 cm.  
(MI&N 17674)



**GIDEON APPAH**  
*The Young Minotaur*, 2021  
Oil and acrylic on canvas  
39 3/8 by 31 1/2 in. 100 by 80 cm.  
(MI&N 17671)



**GIDEON APPAH**  
*White Castle*, 2021  
Oil on sewn canvas  
78 5/8 by 78 5/8 in. 199.7 by 199.7 cm.  
(MI&N 17673)



**GIDEON APPAH**  
*Man on Bed*, 2021  
Oil on canvas  
78 3/8 by 39 1/4 in. 199.1 by 99.7 cm.  
(MI&N 17367)

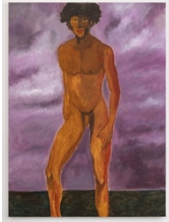


**GIDEON APPAH**  
*A Woman Drowned in Water*, 2021  
Oil on canvas  
31 1/4 by 39 1/4 in. 79.4 by 99.7 cm.  
(MI&N 17368)



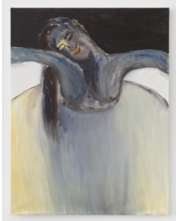
**GIDEON APPAH**  
*Black Beast*, 2020-21  
Oil and acrylic on sewn canvas  
71 7/8 by 96 in. 182.6 by 243.8 cm.  
(MI&N 17682)

# MITCHELL-INNES & NASH



**GIDEON APPAH**

*Nude Boy*, 2021  
Oil on canvas  
69 5/8 by 49 5/8 in. 176.8 by 126 cm.  
(MI&N 17393)



**GIDEON APPAH**

*Woman in a Tub*, 2021  
Oil on canvas  
31 1/2 by 23 5/8 in. 80 by 60 cm.  
(MI&N 17380)



**GIDEON APPAH**

*The Older Couple*, 2020  
Oil and acrylic on canvas  
Diptych: 39 by 54 5/8 in. 99.1 by 138.7 cm.  
Each panel: 39 by 27 1/4 in. 99.1 by 69.2 cm.  
(MI&N 17672)



**GIDEON APPAH**

*Ten Nudes and a Landscape*, 2021  
Oil on canvas  
Diptych: 94 1/2 by 118 1/8 in. 240 by 300 cm.  
Each panel: 47 1/4 by 118 1/8 in. 120 by 300 cm.  
(MI&N 17676)



**GIDEON APPAH**

*Stallion and an Orange Sky*, 2020-21  
Oil on canvas  
39 1/4 by 31 1/4 in. 99.7 by 79.4 cm.  
(MI&N 17683)



**GIDEON APPAH**

*Lonely Stallion*, 2020-21  
Oil and acrylic on canvas  
Diptych: 78 3/4 x 78 7/8 in. 200 x 200.3 cm.  
Each panel: 78 3/4 by 39 1/4 in. 200 by 99.7 cm.  
(MI&N 17681)